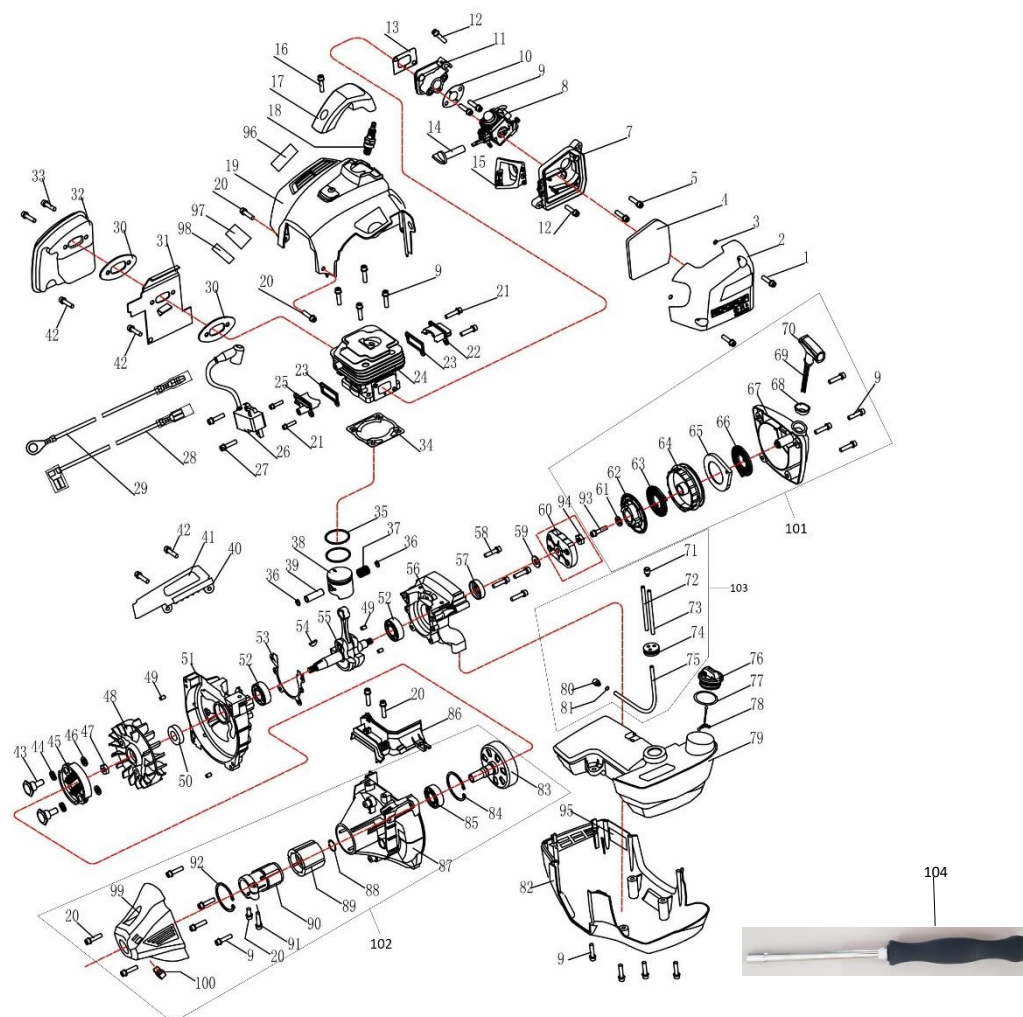


Documentatie tehnica motocoasa Ruris RR 460



Nr.crt	Denumire produs	Product name	Cod comanda
1	surub	Anti-drop screw	psrr460-1-1
2	capac filtru aer	air box cover	psrr460-1-2
3	O-ring	O ring 3.63x2.62	psrr460-1-3
4	filtru aer	sponge	psrr460-1-4
5	surub	screw M5x45	psrr460-1-5
7	suport filtru aer	air box base	psrr460-1-7
8	carburator	carburetor	psrr460-1-8
9	surub	screw M5x25	psrr460-1-9
10	garnitura carburator	gasket rubber	psrr460-1-10
11	izolator	admitting pipe	psrr460-1-11
12	surub	ST screw ST4x10	psrr460-1-12
13	garnitura	gasket	psrr460-1-13

Producător motoutilaje

Documentatie tehnică

14	soc	Choke	psrr460-1-14
15	capac	fan cover	psrr460-1-15
16	surub	Screw ST4.8×14	psrr460-1-16
17	carcasa bujie	Spark Plug cover	psrr460-1-17
18	bujie	Spark Plug	br2trr
19	carcasa	top housing	psrr460-1-19
20	surub	screw M5x14	psrr460-1-20
21	surub	screw M4x14	psrr460-1-21
22	capac	Rear cover	psrr460-1-22
23	garnitura capac	Cover sealing plate	psrr460-1-23
24	cilindru	cylinder	psrr460-1-24
25	capac	Front cover	psrr460-1-25
26	modul aprindere	ignition	psrr460-1-26
27	surub	screw M5x20	psrr460-1-27
28	cablu	wire A	psrr460-1-28
29	cablu	wire B	psrr460-1-29
30	garnitura toba esapament	gasket . Muffler	psrr460-1-30
31	garnitura	gasket . Muffler	psrr460-1-31
32	toba esapament	muffler	psrr460-1-32
33	surub	screw M6x60-12.9	psrr460-1-33
34	garnitura cilindru	gasket \ Cylinder	psrr460-1-34
35	segmenti	piston ring	psrr460-1-35
36	siguranta bolt	circlip \ Piston pin	psrr460-1-36
37	rulment	bearing $\phi 10 \times \phi 13 \times 16$	psrr460-1-37
38	piston	piston	psrr460-1-38
39	bolt piston	piston pin	psrr460-1-39
40	deflector	Fuel tank baffle	psrr460-1-40
41	izolator	Insulation film	psrr460-1-41
42	surub	screw M5x16	psrr460-1-42
43	surub	bolt \ clutch	psrr460-1-43
44	saiba	washer 10	psrr460-1-44
45	ansamblu ambreiaj	clutch assembly	psrr460-1-45
46	saiba	flat washer 8x16x1.5	psrr460-1-46
47	piulita	flange nut M8	psrr460-1-47
48	volanta	magneto rotor	psrr460-1-48
49	bolt	pin $\phi 5 \times 10$	psrr460-1-49
50	simering	OIL-SEAL 15×30×7	psrr460-1-50
51	semicarter stanga	crank case LH side	psrr460-1-51
52	rulment 6202	ball bearing 6202	psrr460-1-52
53	garnitura carter	gasket \ Crank case	psrr460-1-53
54	pana	key 3x5x13	psrr460-1-54

Producător motoutilaje

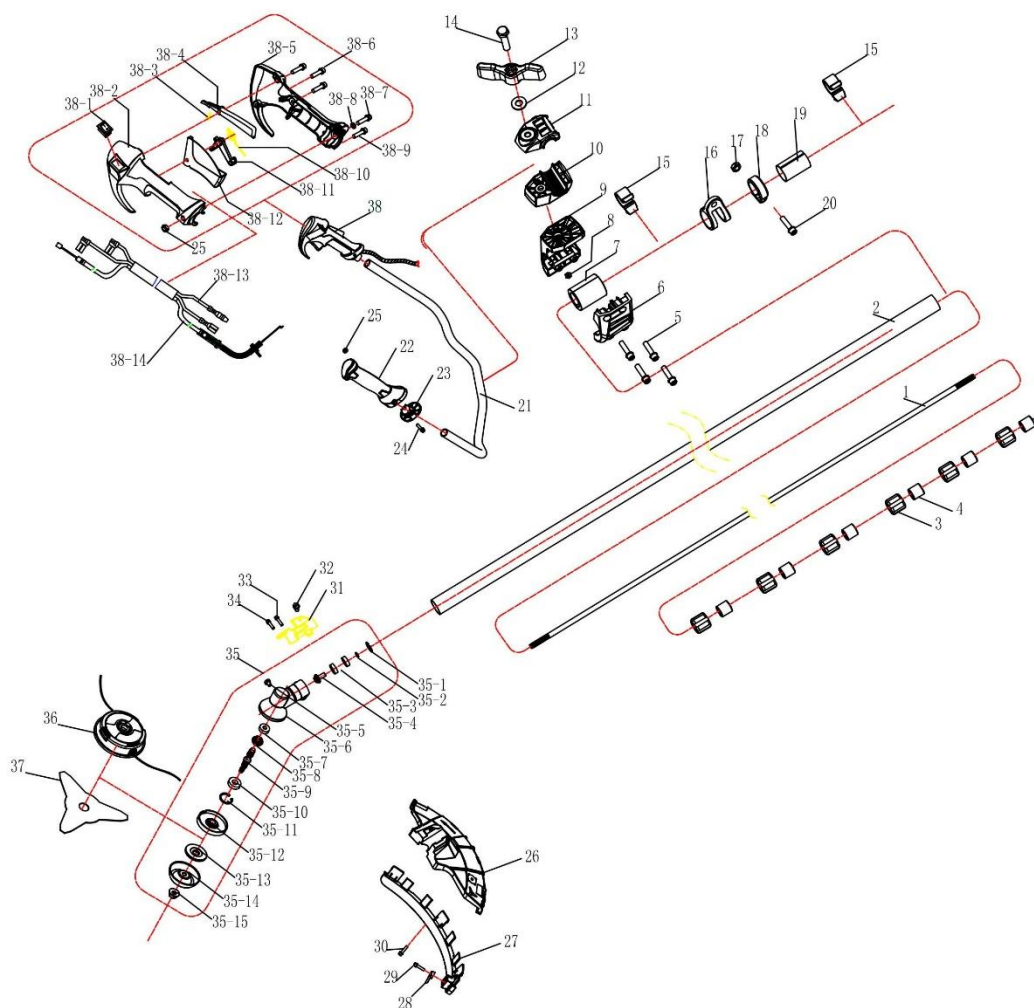
Documentatie tehnică

55	ambielaj	crank shaft ass'y	psrr460-1-55
56	semicarcter dreapta	crank case RH side	psrr460-1-56
57	simering	OIL-SEAL 12x22x7	psrr460-1-57
58	surub	screw M5x30	psrr460-1-58
59	saiba	flat washer 8	psrr460-1-59
60	cuplaj	start reel	psrr460-1-60
61	saiba	plate washer 5x16x1	psrr460-1-61
62	butuc	ratchet wheel	psrr460-1-62
63	arc	Coil spring	psrr460-1-63
64	rola demaror	start pulley	psrr460-1-64
65	carcasa arc	coil spring housing	psrr460-1-65
66	arc	coil spring	psrr460-1-66
67	carcasa demaror	start housing	psrr460-1-67
68	inel	eyelet	psrr460-1-68
69	sfoara demaror	start rope	psrr460-1-69
70	maner demaror	start grip	psrr460-1-70
71	gura aspiratie	Balancer	psrr460-1-71
72	furtun aer	air tube	psrr460-1-72
73	furtun retur	return tube	psrr460-1-73
74	furtun retinere	retainer . fuel tube	psrr460-1-74
75	furtun combustibil	fuel tube	psrr460-1-75
76	buson rezervor	fuel tank cover	psrr460-1-76
77	garnitura	rubber bump $\phi 28 \times \phi 4$	psrr460-1-77
78	fir fluture	Anti-drop plate	psrr460-1-78
79	rezervor combustibil	fuel tank ass'y	psrr460-1-79
80	filtru combustibil	filter fuel	psrr460-1-80
81	siguranta	Fuel tube circlip	psrr460-1-81
82	carcasa rezervor	fuel tank housing	psrr460-1-82
83	oala ambreiaj	clutch drum	psrr460-1-83
84	siguranta	circlip 35	psrr460-1-84
85	rulment 6202-2RS	ball bearing 6202-2RS	psrr460-1-85
86	placa	plastic plate	psrr460-1-86
87	carcasa oala ambreiaj	clutch drum housing	psrr460-1-87
88	siguranta	circlip 15	psrr460-1-88
89	manson	rubber	psrr460-1-89
90	clema	clamp	psrr460-1-90
91	surub	screw M6x25	psrr460-1-91
92	siguranta	circlip 45	psrr460-1-92
93	surub	screw M5x14	psrr460-1-93
94	piulita	nut 8	psrr460-1-94
95	izolatie termica	tank heat insulation mebrane	psrr460-1-95

Producător motoutilaje

Documentatie tehnică

96	izolatie termica	heat insulation mebrane A	psrr460-1-96
97	izolatie termica	heat insulation mebrane B	psrr460-1-97
98	izolatie termica	heat insulation mebrane C	psrr460-1-98
99	manson carcasa ambreiaj	Clutch housing sleeve	psrr460-1-99
100	contorizator	Accelerator wire card	psrr460-1-100
101	ansamblu demaror	starter assy	psrr460-1-101
102	ansamblu cuplaj	coupling assy.	psrr460-1-102
103	ansamblu filtru combustibil	fuel filter assy.	psrr460-1-103
104	cheie reglaj carburator	carburetor adjustment wrench	psrr-1-1



Nr.crt	Denumire produs	Product name	Cod comanda
1	ax	driver shaft	psrr360-2-1
2	tija	AL tubing	psrr360-2-2

Producător motoutilaje

Documentatie tehnică

3	bucsa	rubber	psrr360-2-3
4	rulment	bearing	psrr360-2-4
5	surub	screw M5×20	psrr360-2-5
6	colier	left clamp	psrr360-2-6
7	manson	Damping supporting rubber	psrr360-2-7
8	piulita	nut 8	psrr360-2-8
9	colier	right clamp	psrr360-2-9
10	placa inferioara	lower clamp	psrr360-2-10
11	placa superioara	upper clamp	psrr360-2-11
12	saiba	plate washer 8	psrr360-2-12
13	piulita fluture	lock knob	psrr360-2-13
14	surub	screw M8×60	psrr360-2-14
15	carlig cablu	wire locking hoop	psrr360-2-15
16	suport ham	Hanging board	psrr360-2-16
17	piulita	nut5	psrr360-2-17
18	colier	locking hoop	psrr360-2-18
19	suport	supporting seat	psrr360-2-19
20	surub	screw M5×22	psrr360-2-20
21	coarne	AL tubing	psrr360-2-21
22	manson maner	rubber handle	psrr360-2-22
23	colier	left handle clamp	psrr360-2-23
24	surub	screw M5×45	psrr360-2-24
25	piulita	nut M5	psrr360-2-25
26	aparatoare	guard	psrr360-2-26
27	prelungire aparatoare	Strake of protective cover	psrr360-2-27
28	cutit	cutting blade	psrr360-2-28
29	surub	ST screw ST4.2×13	psrr360-2-29
30	surub	ST screw ST4.8×19	psrr360-2-30
31	placa prindere aparatoare	clamp \ guard	psrr360-2-31
32	surub	lock screw	psrr360-2-32
33	surub	screw M6×30	psrr360-2-33
34	surub	screw M6×14	psrr360-2-34
35	cap reductor	gear box assembly 26	psrr360-2-35
35-12	saiba conica	blade retainer	psrr360-2-35a
35-13	saiba	cap washer	psrr360-2-35b
35-14	oala protectie	bottom guard	psrr360-2-35c
35-15	piulita	flange nut M10x1.25 left	psrr360-2-35d
36	autocut	string head assembly	psrr360-2-36
37	cutit	blade	psrr360-2-37
38	ansamblu maneta acceleratie	control handle assembly	psrr360-2-38

RURIS

Producător motoutilaje



Documentatie tehnică

Craiova, ROMÂNIA