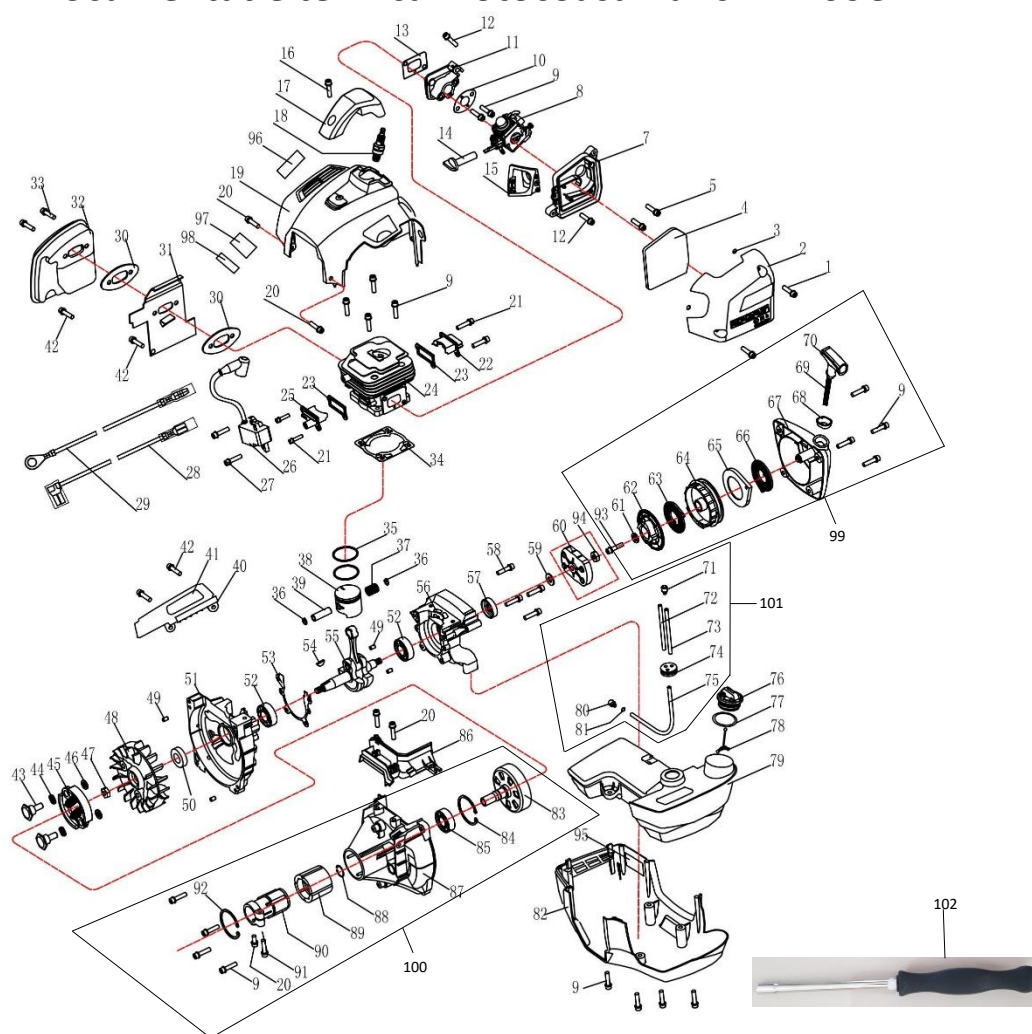


## Documentatie tehnica motocoasa Ruris RR 400C



Nr.crt	Denumire produs	Product name	Cod comanda
1	surub	Anti-drop screw	psrr400c-1-1
2	capac filtru aer	air box cover	psrr400c-1-2
3	O-ring	O ring 3.63x2.62	psrr400c-1-3
4	filtru aer	spone	psrr400c-1-4
5	surub	screw M5x45	psrr400c-1-5
7	suport filtru aer	air box base	psrr400c-1-7
8	carburator	carburetor	psrr400c-1-8
9	surub	screw M5x25	psrr400c-1-9
10	garnitura carburator	gasket rubber	psrr400c-1-10
11	izolator	admitting pipe	psrr400c-1-11
12	surub	ST screw ST4×10	psrr400c-1-12
13	garnitura	gasket	psrr400c-1-13

## Producător motoutilaje

## Documentatie tehnică

14	soc	Choke	psrr400c-1-14
15	capac	fan cover	psrr400c-1-15
16	surub	Screw ST4.8×14	psrr400c-1-16
17	carcasa bujie	Spark Plug cover	psrr400c-1-17
18	bujie	Spark Plug	br2trr
19	carcasa	top housing	psrr400c-1-19
20	surub	screw M5x14	psrr400c-1-20
21	surub	screw M4x12	psrr400c-1-21
22	capac	Rear cover	psrr400c-1-22
23	garnitura capac	Cover sealing plate	psrr400c-1-23
24	cilindru	cylinder	psrr400c-1-24
25	capac	Front cover	psrr400c-1-25
26	modul aprindere	ignition	psrr400c-1-26
27	surub	screw M5x20	psrr400c-1-27
28	cablu	wire A	psrr400c-1-28
29	cablu	wire B	psrr400c-1-29
30	garnitura toba esapament	gasket . Muffler	psrr400c-1-30
31	garnitura	gasket . Muffler	psrr400c-1-31
32	toba esapament	muffler	psrr400c-1-32
33	surub	screw M6x60-12.9	psrr400c-1-33
34	garnitura cilindru	gasket \ Cylinder	psrr400c-1-34
35	segmenti	piston ring	psrr400c-1-35
36	siguranta bolt	circlip \ Piston pin	psrr400c-1-36
37	rulment	bearing $\phi 10 \times \phi 13 \times 16$	psrr400c-1-37
38	piston	piston	psrr400c-1-38
39	bolt piston	piston pin	psrr400c-1-39
40	deflector	Fuel tank baffle	psrr400c-1-40
41	izolator	Insulation film	psrr400c-1-41
42	surub	screw M5x16	psrr400c-1-42
43	surub	bolt \ clutch	psrr400c-1-43
44	saiba	washer 10	psrr400c-1-44
45	ansamblu ambreiaj	clutch assembly	psrr400c-1-45
46	saiba	flat washer 8x16x1.5	psrr400c-1-46
47	piulita	flange nut M8	psrr400c-1-47
48	volanta	magneto rotor	psrr400c-1-48
49	bolt	pin $\phi 5 \times 10$	psrr400c-1-49
50	simering	OIL-SEAL 15×30×7	psrr400c-1-50
51	semicarter stanga	crank case LH side	psrr400c-1-51
52	rulment 6202	ball bearing 6202	psrr400c-1-52
53	garnitura carter	gasket \ Crank case	psrr400c-1-53
54	pana	key 3x5x13	psrr400c-1-54

## Producător motoutilaje

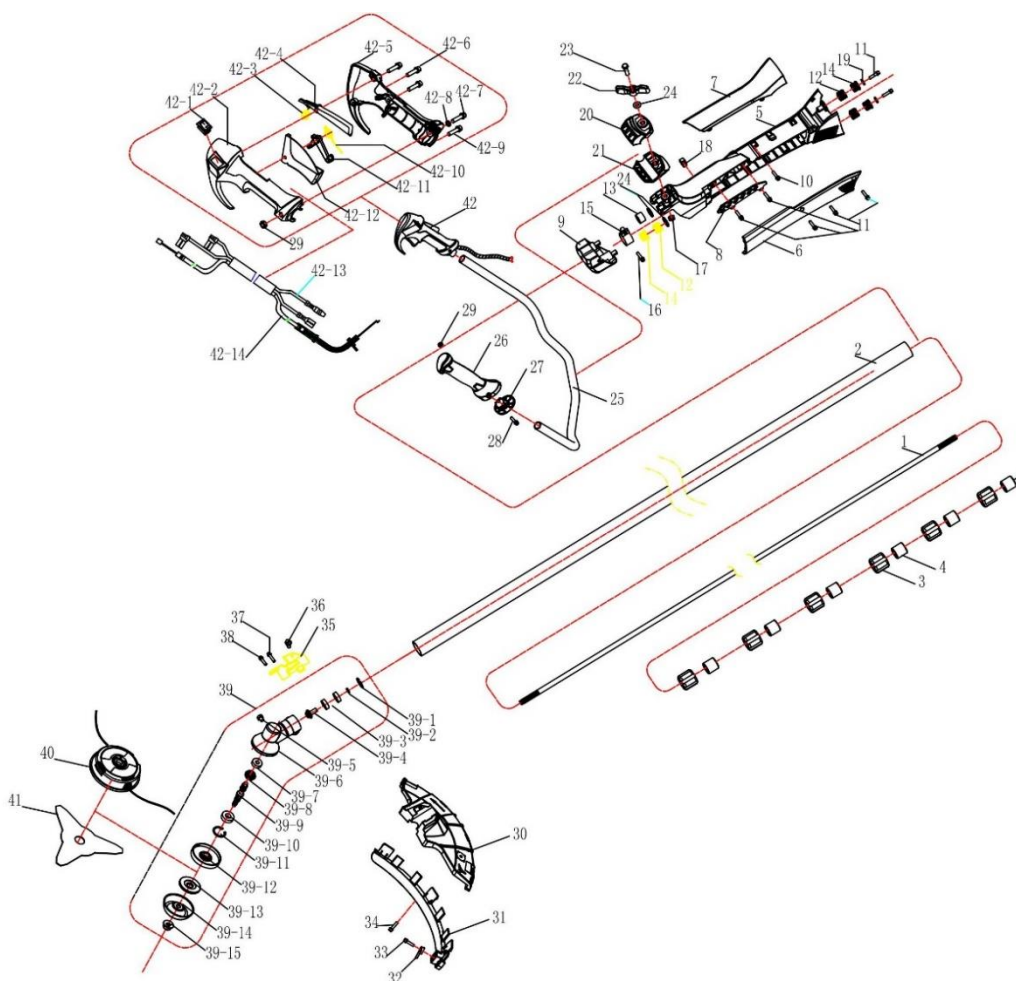
## Documentatie tehnică

55	ambielaj	crank shaft ass'y	psrr400c-1-55
56	semicarcter dreapta	crank case RH side	psrr400c-1-56
57	simering	OIL-SEAL 12x22x7	psrr400c-1-57
58	surub	screw M5x30	psrr400c-1-58
59	saiba	flat washer 8	psrr400c-1-59
60	cuplaj	start reel	psrr400c-1-60
61	saiba	plate washer 5x16x1	psrr400c-1-61
62	butuc	ratchet wheel	psrr400c-1-62
63	arc	Coil spring	psrr400c-1-63
64	rola demaror	start pulley	psrr400c-1-64
65	carcasa arc	coil spring housing	psrr400c-1-65
66	arc	coil spring	psrr400c-1-66
67	carcasa demaror	start housing	psrr400c-1-67
68	inel	eyelet	psrr400c-1-68
69	sfoara demaror	start rope	psrr400c-1-69
70	maner demaror	start grip	psrr400c-1-70
71	gura aspiratie	Balancer	psrr400c-1-71
72	furtun aer	air tube	psrr400c-1-72
73	furtun retur	return tube	psrr400c-1-73
74	furtun retinere	retainer . fuel tube	psrr400c-1-74
75	furtun combustibil	fuel tube	psrr400c-1-75
76	buson rezervor	fuel tank cover	psrr400c-1-76
77	garnitura	rubber bump $\phi 28 \times \phi 4$	psrr400c-1-77
78	fir fluture	Anti-drop plate	psrr400c-1-78
79	rezervor combustibil	fuel tank ass'y	psrr400c-1-79
80	filtru combustibil	filter fuel	psrr400c-1-80
81	siguranta	Fuel tube circlip	psrr400c-1-81
82	carcasa rezervor	fuel tank housing	psrr400c-1-82
83	oala ambreiaj	clutch drum	psrr400c-1-83
84	siguranta	circlip 35	psrr400c-1-84
85	rulment 6202-2RS	ball bearing 6202-2RS	psrr400c-1-85
86	placa	plastic plate	psrr400c-1-86
87	carcasa oala ambreiaj	clutch drum housing	psrr400c-1-87
88	siguranta	circlip 15	psrr400c-1-88
89	manson	rubber	psrr400c-1-89
90	clema	clamp	psrr400c-1-90
91	surub	screw M6x25	psrr400c-1-91
92	siguranta	circlip 45	psrr400c-1-92
93	surub	screw M5x14	psrr400c-1-93
94	piulita	nut 8	psrr400c-1-94
95	izolatie termica	tank heat insulation mebrane	psrr400c-1-95

## Producător motoutilaje

## Documentatie tehnică

96	izolatie termica	heat insulation mebrane A	psrr400c-1-96
97	izolatie termica	heat insulation mebrane B	psrr400c-1-97
98	izolatie termica	heat insulation mebrane C	psrr400c-1-98
99	ansamblu demaror	starter assy.	psrr400c-1-99
100	ansamblu cuplaj	coupling assy.	psrr400c-1-100
101	ansamblu filtru combustibil	fuel filter assy.	psrr400c-1-101
102	cheie reglaj carburator	carburetor adjustment wrench	psrr-1-1



Nr.crt	Denumire produs	Product name	Cod comanda
1	ax	driver shaft	psrr400c-2-1
2	tija	AL tubing	psrr400c-2-2
3	bucsa	rubber	psrr400c-2-3
4	rulment	bearing	psrr400c-2-4
5	carcasa anti-vibratie	Anti-vibration housing	psrr400c-2-5
6	carcasa anti-vibratie inferioara	Anti-vibration housing side cover	psrr400c-2-6

## Producător motoutilaje

## Documentatie tehnică

7	carcasa anti-vibratie superioara	Anti-vibration housing upper cover	psrr400c-2-7
8	suport ham	Hanging board	psrr400c-2-8
9	manson	Damping supporting seat (Ø28)	psrr400c-2-9
10	surub	ST screw ST4.8×12	psrr400c-2-10
11	surub	ST screw ST4.8×19	psrr400c-2-11
12	arc amortizor	Shock absorber spring	psrr400c-2-12
13	amortizor fata	Front shock absorption sleeve	psrr400c-2-13
14	amortizor spate	Rear shock absorption sleeve	psrr400c-2-14
15	colier	locking hoop	psrr400c-2-15
16	surub	screw M5×16	psrr400c-2-16
17	piulita	nut M8	psrr400c-2-17
18	suport cablu	wire hold	psrr400c-2-18
19	saiba	plate washer 5	psrr400c-2-19
20	placa superioara	upper clamp	psrr400c-2-20
21	placa inferioara	lower clamp	psrr400c-2-21
22	piulita fluture	lock knob	psrr400c-2-22
23	surub	screw M8×60	psrr400c-2-23
24	saiba	plate washer 8	psrr400c-2-24
25	coarne	AL tubing	psrr400c-2-25
26	manson maner	rubber handle	psrr400c-2-26
27	colier	left handle clamp	psrr400c-2-27
28	surub	screw M5×45	psrr400c-2-28
29	piulita	nut M5	psrr400c-2-29
30	aparatoare	guard	psrr400c-2-30
31	prelungire aparatoare	Strake of protective cover	psrr400c-2-31
32	cutit	cutting blade	psrr400c-2-32
33	surub	ST screw ST4.2×13	psrr400c-2-33
34	surub	ST screw ST4.8×19	psrr400c-2-34
35	placa prindere aparatoare	clamp \ guard	psrr400c-2-35
36	surub	lock screw	psrr400c-2-36
37	surub	screw M6×12	psrr400c-2-37
38	surub	screw M6×30	psrr400c-2-38
39	cap reductor	gear box assembly	psrr400c-2-39
39-12	saiba conica	blade retainer	psrr400c-2-39a
39-13	saiba	cap washer	psrr400c-2-39b
39-14	oala protectie	bottom guard	psrr400c-2-39c
39-15	piulita	flange nut M10x1.25 left	psrr400c-2-39d
40	autocut	string head assembly	psrr400c-2-40
41	cutit	blade	psrr400c-2-41
42	ansamblu maneta acceleratie	control handle assembly	psrr400c-2-42



Producător motoutilaje



Documentatie tehnică

Craiova, ROMÂNIA