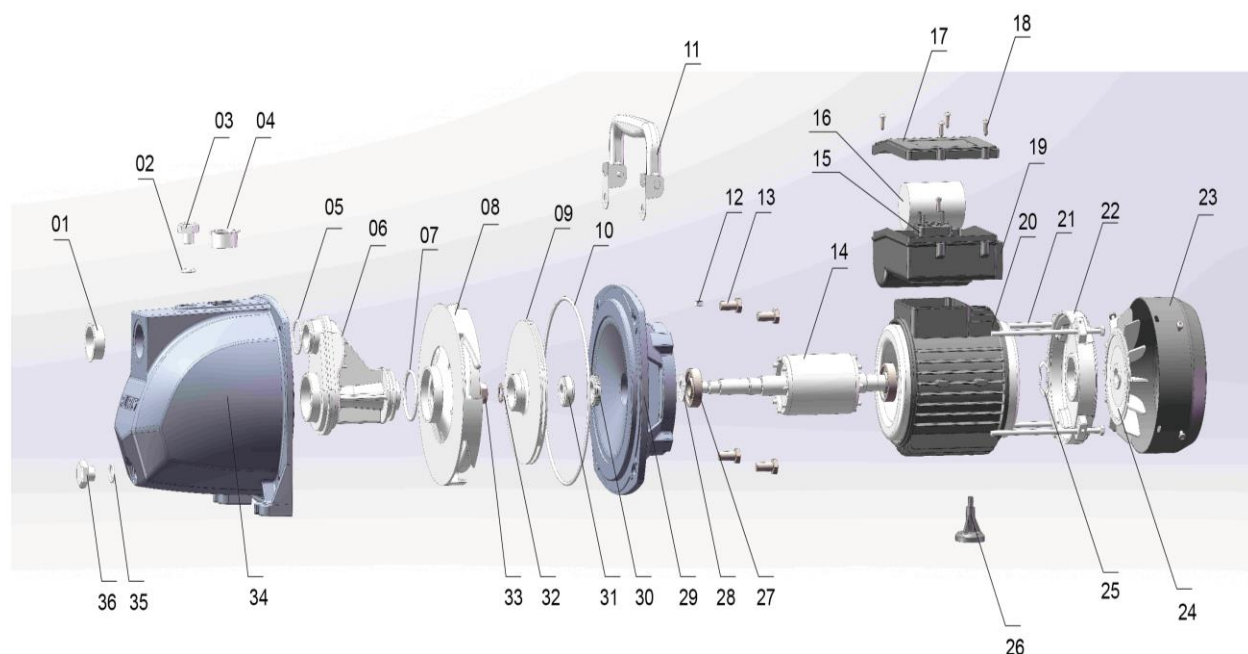


Documentatie tehnica pompa de gradina Ruris Aqua Pump 800S



Nr.crt	Denumire produs	Product name	Cod comanda
1	dop	Plastic cap	pspg800s-1
2	o-ring	O ring for filling plug	pspg800s-2
3	buson amorsare	Filling plug	pspg800s-3
4	dop	Plastic cap	pspg800s-4
5	o-ring	O ring for Venturi	pspg800s-5
6	tub venturi	Venturi Tube	pspg800s-6
7	o-ring	O ring for diffuser	pspg800s-7
8	difuzor	Diffuser	pspg800s-8
9	turbina	Impeller	pspg800s-9
10	o-ring	O ring for Pump Body	pspg800s-10
11	maner	Handle	pspg800s-11
12	pana	Key	pspg800s-12
13	surub	Screw For Pump Body	pspg800s-13
14	rotor	Shaft and rotor	pspg800s-14
15	saiba	Washer for terminal box	pspg800s-15
16	condensator	Capacitor	pspg800s-16
17	capac	Terminal Cover	pspg800s-17

Producător motoutilaje

Documentatie tehnică

18	surub	Screw For Terminal Box Fixing	pspg800s-18
19	cutie	Capacitor Holding box	pspg800s-19
20	stator	casing with wound stator	pspg800s-20
21	tija filetata	Motor-Tie-rod	pspg800s-21
22	capac motor	Motor Cover	pspg800s-22
23	capac ventilator	Fan Cover	pspg800s-23
24	ventilator	Fan	pspg800s-24
25	inel ajustare	Adjusting Ring	pspg800s-25
26	picior	Foot	pspg800s-26
27	rulment	Ball Bearing	pspg800s-27
28	protectie	Splash Guard	pspg800s-28
29	suport pompa	Pump Support	pspg800s-29
30	etansare mecanica	Mechanical Seal	pspg800s-30
31	etansare mecanica	Mechanical Seal	pspg800s-31
32	saiba	lock washer	pspg800s-32
33	piulita	Impeller stop Nut	pspg800s-33
34	corp pompa	pump casting	pspg800s-34
35	o-ring	O ring for drain plug	pspg800s-35
36	buson scurgere	Drain plug	pspg800s-36